

05

Line Rescue Operative

DURATION

4 Days but must be carried out in conjunction with HSR1

RATIO OF TRAINERS TO TRAINEES

Normally 1:4

REGISTRATION AND PRE-COURSE INSTRUCTIONS

- All delegates to be registered on the course registration form
- All delegates to be advised of the following:
 - Fire procedure
 - Toilets and welfare

This module is designed as an enhancement of HSR1. Delegates must successfully complete HSR1 prior to commencing this module.

INTRODUCTION

Line rescue operative training is designed to provide:

- Rescue Personnel with all the relevant skills required for the safe implementation of line rescue techniques under the supervision of a Line Rescue Supervisor.
- An outline of the current Legislation and guidelines
- A guide to options for compliance
- A background to the equipment
- Details of the equipment standards to allow usage within it's intended purpose
- The criteria for equipment issue, ID Marking, inspection, record keeping, maintenance and withdrawal from service

COURSE SYLLABUS**Theory**

- Principles of the line rescue
- Pulley systems and mechanical advantages
- Strengths and weaknesses of equipment and components
- Selection of Anchorages
- Principles of Raising / Lowering
- Principles of tension lines / cable ways
- Principles of twin line working
- Equipment Storage
- Equipment Maintenance
- Equipment Inspection

Practical

- Personal Safety at height
- Anchorage/ Rigging
- Pulley systems – use and efficiency
- Raising or lowering a casualty
- Raising or lowering a Rescuer
- Tension lines or cableways
- Working in Restraint
- Types of harnesses and applications
- Application of Stretchers

COURSE SUMMARY

In addition to the test carried out in HSR1 all delegates will be monitored by the trainer throughout the practical sessions. Any concerns will be addressed by delegate and trainer on a continual basis.

In addition to the test carried out in HSR1 the course includes a final practical assessment.

- Summary of the topics covered
- Clarify areas of concern
- Issue of course feedback forms
- Thank the delegates for attending

SPECIALIST EQUIPMENT REQUIRED

- Line Rescue kits
- Fall arrest harnesses
- Fall arrest and restraint lanyards
- Stretchers
- Casualty Harness

FEEDBACK AFTER COURSE

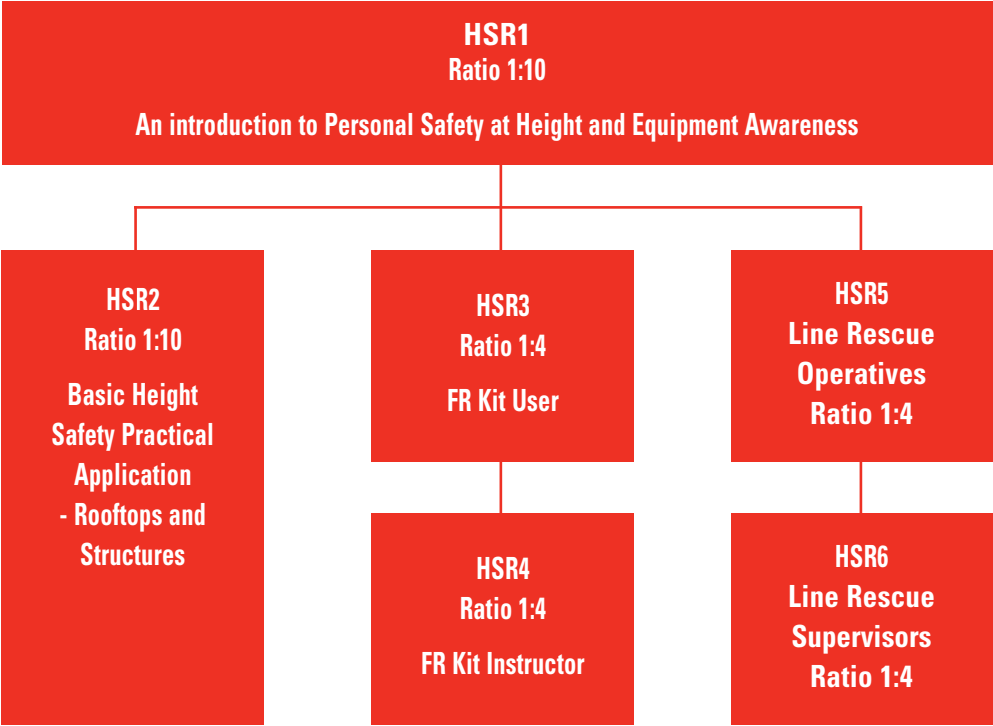
- Certificate for all successful delegates, valid for three years
- Photo ID Card for all successful delegates, valid for three years

RECORDS TO BE KEPT BY SPANSET

- Course registration forms
- Copy photo for duplicate issue
- Course feedback forms



TRAINING COURSE HIERARCHY



COURSE JOINING INSTRUCTIONS

Course Assembly

Unless otherwise stated, all courses are held at SpanSet (UK) Limited and will assemble at 0900 hrs daily. Delegates should report to the main training reception upon arrival.

Food & Refreshment

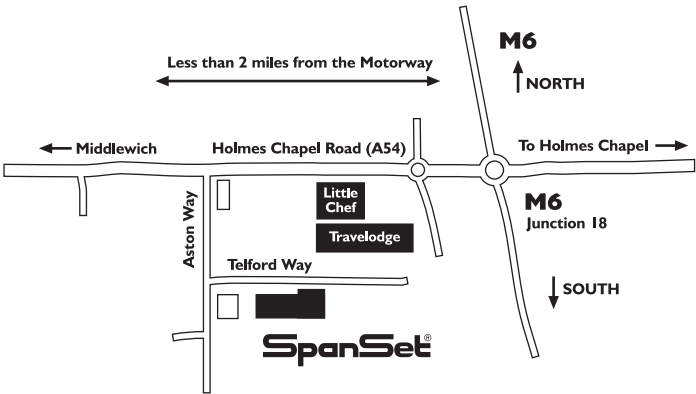
Refreshments will be provided throughout the day on all courses.
A lunch will be provided on all courses of a day or more in duration held at SpanSet.

Equipment & Clothing

All equipment required throughout the course will be provided by SpanSet Ltd.
Candidates should provide their own comfortable clothing and footwear, with provision made for inclement weather conditions, i.e. fleeces, waterproofs, windproof, etc.

Accommodation

Details of local accommodation on request.



 **BuyOnline** @ www.spanset.co.uk

**GENERAL
INFORMATION**

SpanSet®

SpanSet Ltd, Telford Way, Middlewich, Cheshire CW10 0HX, UK
Tel: +44 (0)1606 737494 Fax: +44 (0)1606 737502 www.spanset.co.uk